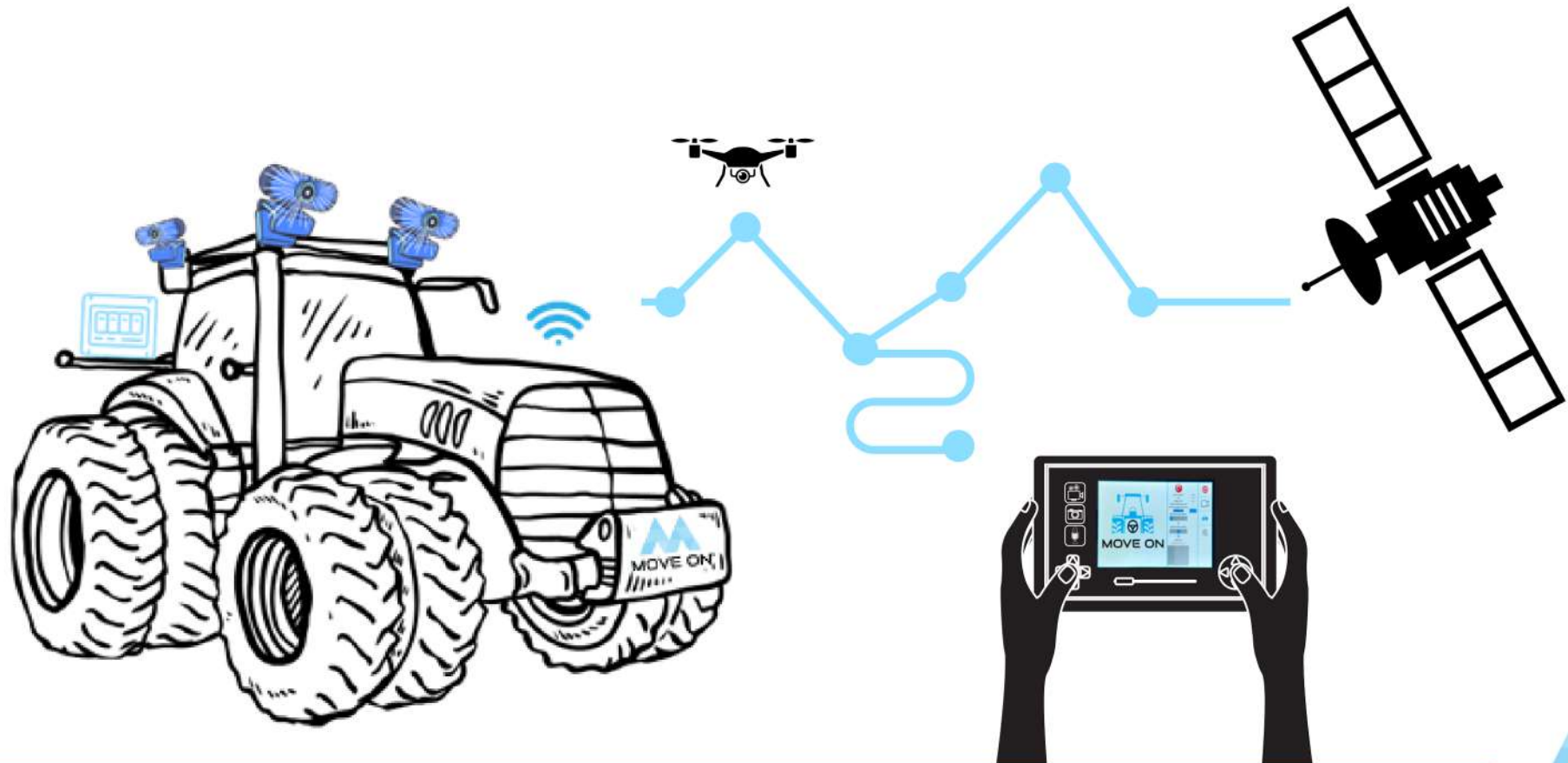




# TASAI<sup>®</sup>

## Autonomous Tractor Kit





# Autonomous Tractor Kit

**TASAI**<sup>®</sup>

TASAI - Autonomous Tractor Kit integrates into tractors and agricultural equipment in a cloud-supported manner, providing 360-degree field and plant vision and autonomy.

Cloud and 5G Support



Mobile Applications and Web Platform



360 Degree view with  
6 Cameras



Artificial Intelligence Computer



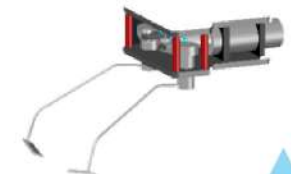
Spraying Unit



Steering Motor



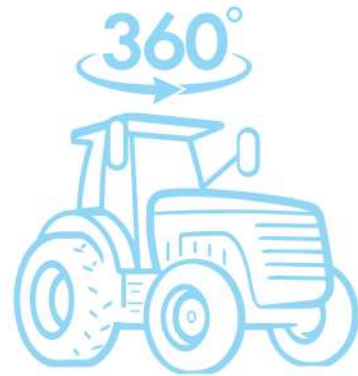
Hoing Unit





# Autonomous Tractor Kit

TASAI - Autonomous Tractor Kit transforms tractors and agricultural equipment into data-driven smart devices. With TASAI, vision hoeing, variable rate fertilisation and zonal spraying technologies come with autonomous driving feature.



360 Degree  
Autonomous Driving



Visually  
Hoeing



Regional  
Spraying



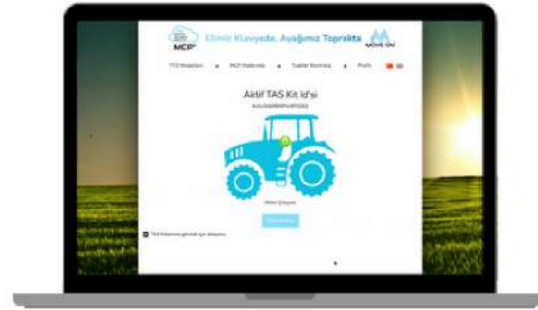
Variable Rate  
Fertilisation

# Autonomous Tractor Kit



TASAI - Autonomous Tractor Kit, tractors and agricultural equipment can be remotely controlled via mobile applications and web platform.

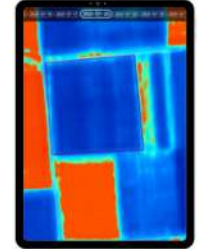
Control via Web Platform



Control via Mobile Application



Field & Plant Mapping and Recipe Creation



Location Tracking

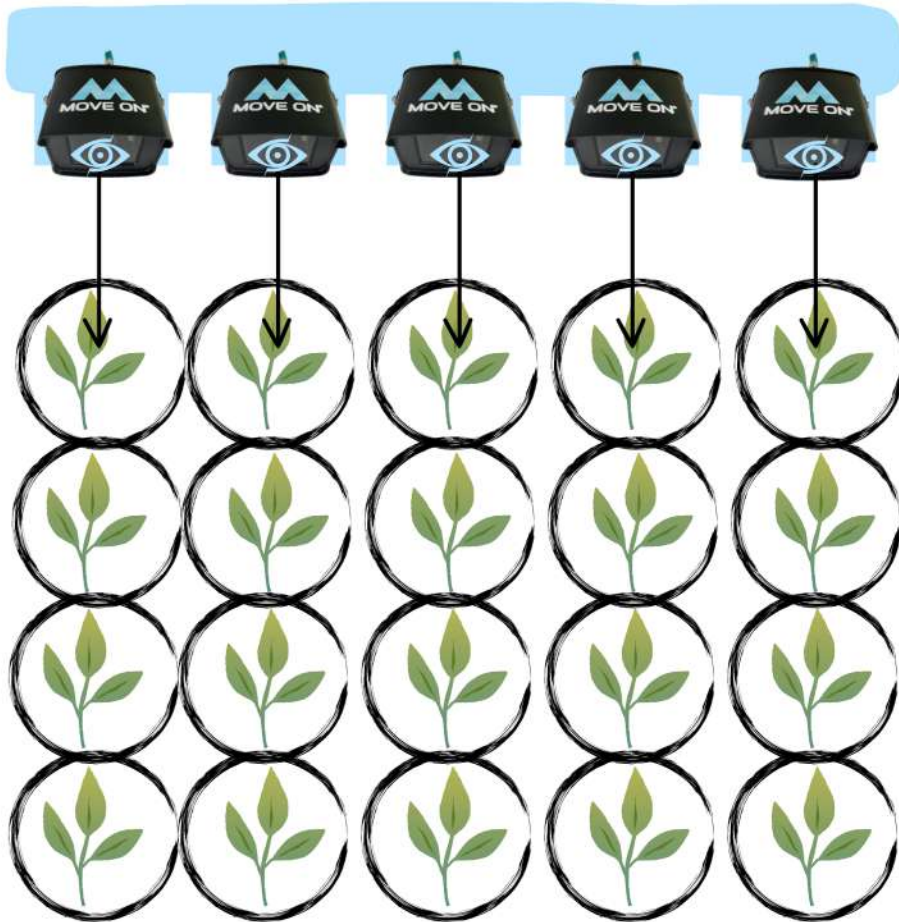




**TASAI**<sup>®</sup>

# TASAI - Visually Hoeing

TASAI - Autonomous Tractor Kit automates the manual hoeing process by seeing the plant and the planting distance on the row with the help of cameras.



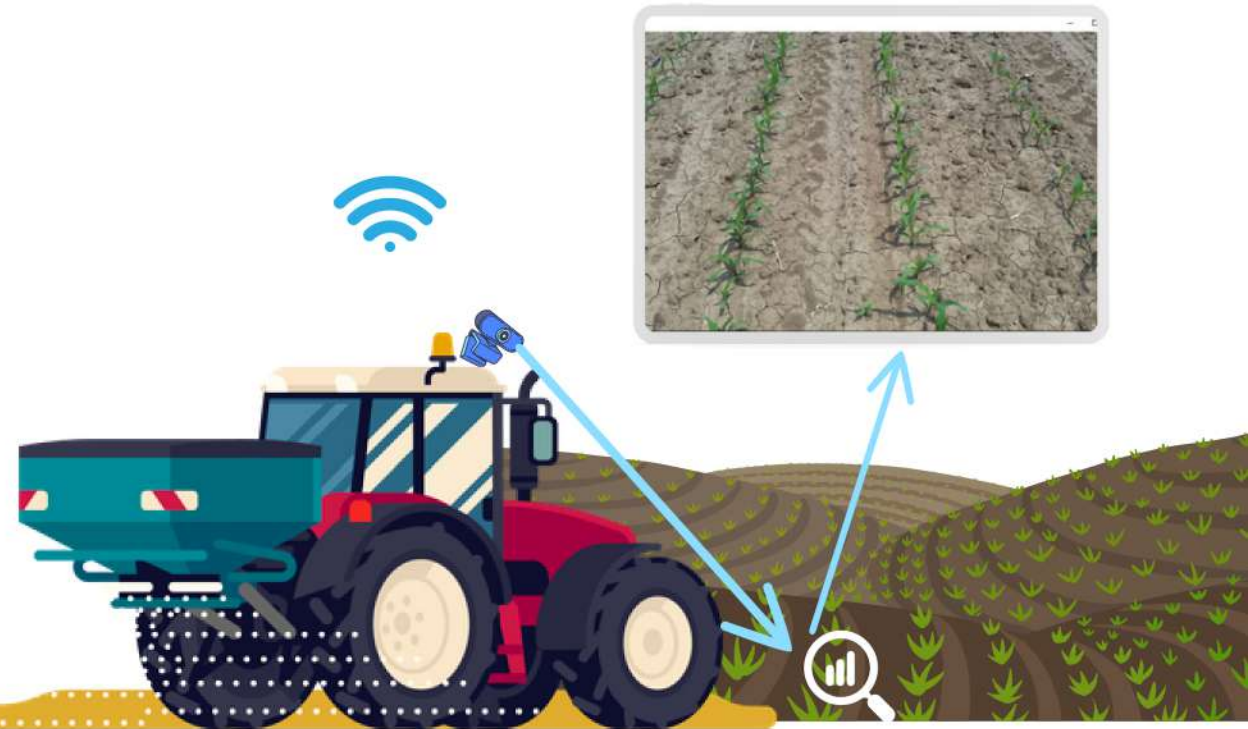
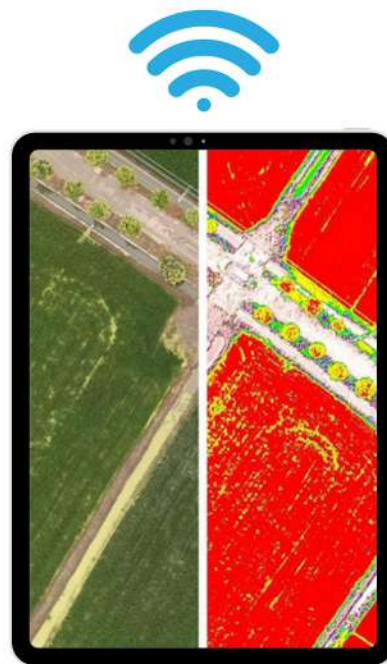
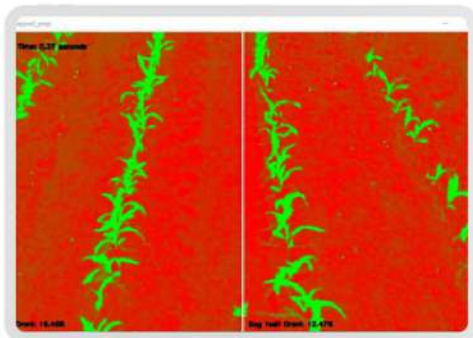


# TASAI - Variable Rate Fertilisation

**TASAI**®

TASAI - The Autonomous Tractor Kit is integrated into the tractor and fertiliser machine and prescribes the field and plant by seeing with cameras and artificial intelligence software.

TASAI generates commands to the machine and tractor to fertilise as much as the plant needs with the prescription it creates.

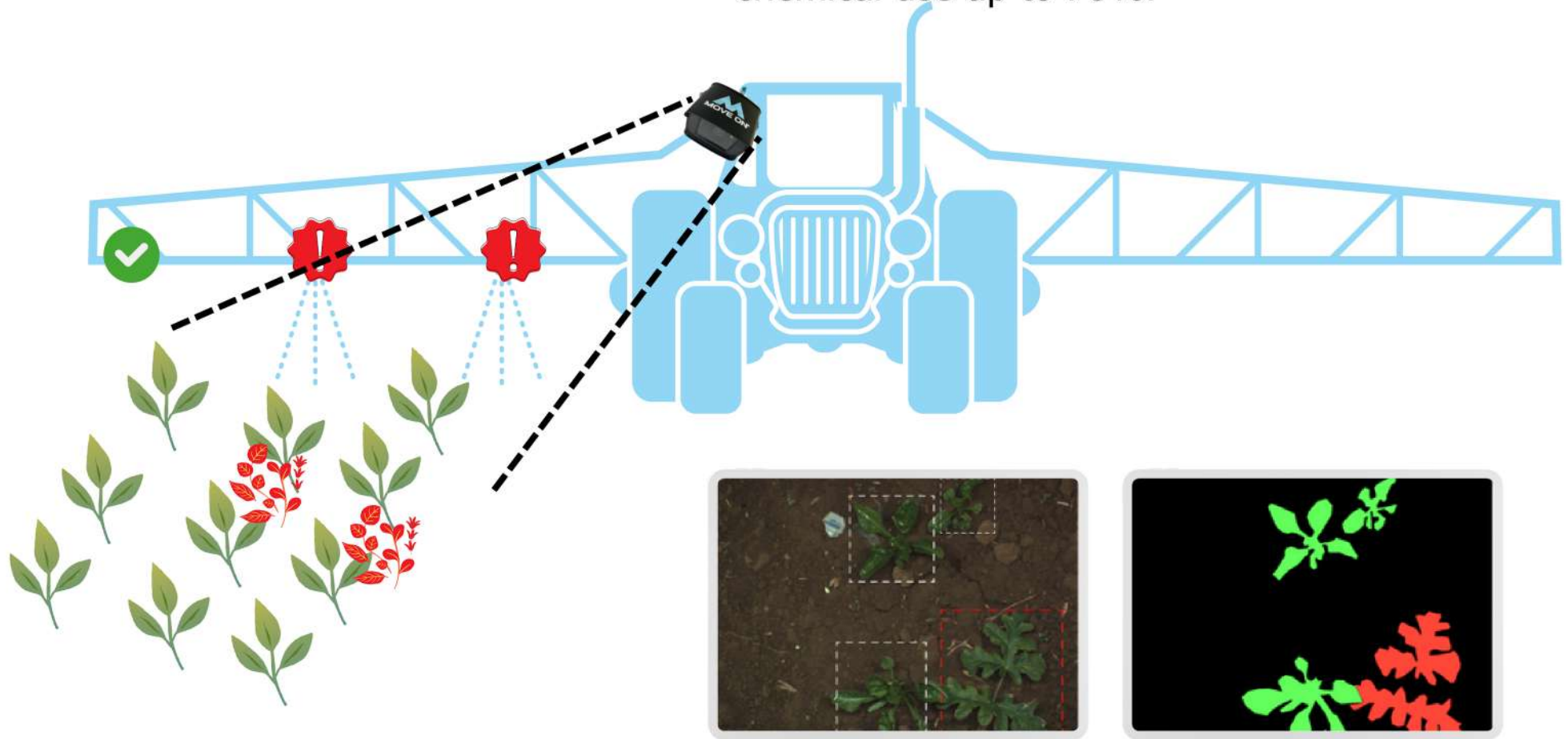


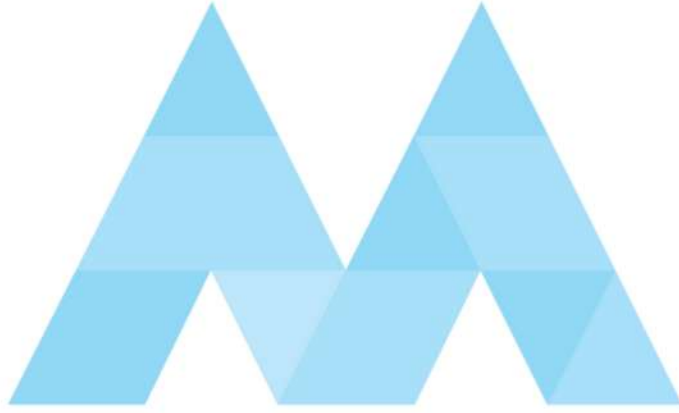


# TASAI - Regional Spraying

**TASAI**®

TASAI - Autonomous Tractor Kit recognises and distinguishes plants and weeds by seeing them with cameras and performs regional spraying. Thus, it reduces chemical use up to 70%.





# MOVE ON®

**"Hands on the keyboard,  
feet in the field"**

